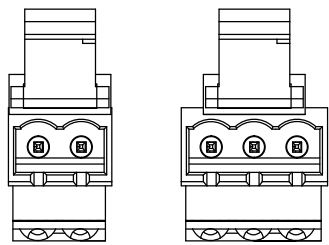
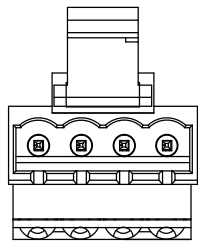


REVISION RECORD			
REV.	CONTENT	MOD.	DATE
△0	初版发行		

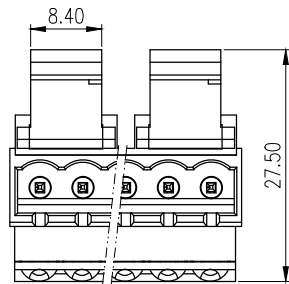


2P

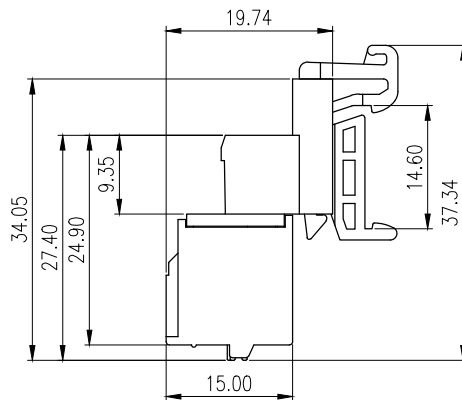
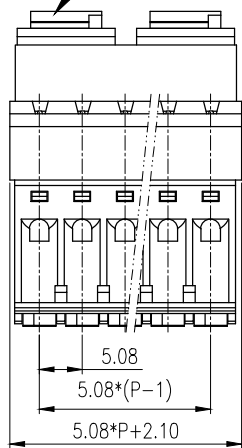
3P



4P



含5P以上为两边各一个脚



NOTES1:

UL Standard:

1.Voltage Rating: 300V, Current Rating: 10A

NOTES2:

1.Pitch: 5.08mm

2.Withstand Voltage : AC2500V for 1 minute

3.Using Temperature Range : -40℃ ~ +105℃

4.Suitable Electric Wire: 26-12AWG

技术要求1:

UL 标准:

1. 额定电压: 300V, 额定电流: 10A

技术要求2:

1. 间距: 5.08mm

2. 耐电压值: AC2500V/min

3. 使用条件: -40℃~+105℃

4. 适用线规: 26~12AWG

	pitch dimension			Nominal dimension					— /
	over 0 to 6	over 6 to 10	over 10 to 24	over 0 to 30	over 30 to 60	over 60 to 100	over 100 to 150	over 150	
variable range	0	6	10	0	30	60	100	150	□
Tolerance	±0.1	±0.15	±0.25	±0.2	±0.3	±0.5	±0.7	±1.0	○

6	LC15-脚	1067T0Y00AV	1-2	PA66-V0	
5	LC60-5.08五金件	2083B0001AV	P	磷青铜	镀亮锡
4	LC6-5.08-弹片	F2A0DLC658BV	p	不锈钢	
3	LC6-5.08-按钮	1020D0Y01AV	P	POM	
2	LC26U-5.08-盖板	2085A0YXXAV	1	PA66-V0	
1	LC6-5.08-本体	1020A0YXXAV	1	PA66-V0	
NO.	NAME OF PART	NO. OF PART	Q' TY	MATERIAL	NOTES
DES.	CMZ	DATE 2025/03/26	UNITS	MM	THIRD ANGLE PROJECTION
CHK.		DATE	SIZE	A4	1 of 1
APP.		DATE	SCALE	1:1	REV: V0
上海有乐电气有限公司 Shanghai YouLe Electric Co.,LTD				TITLE	LC25U-5.08-XXP-1Y-00A LC25U-5.08-成品